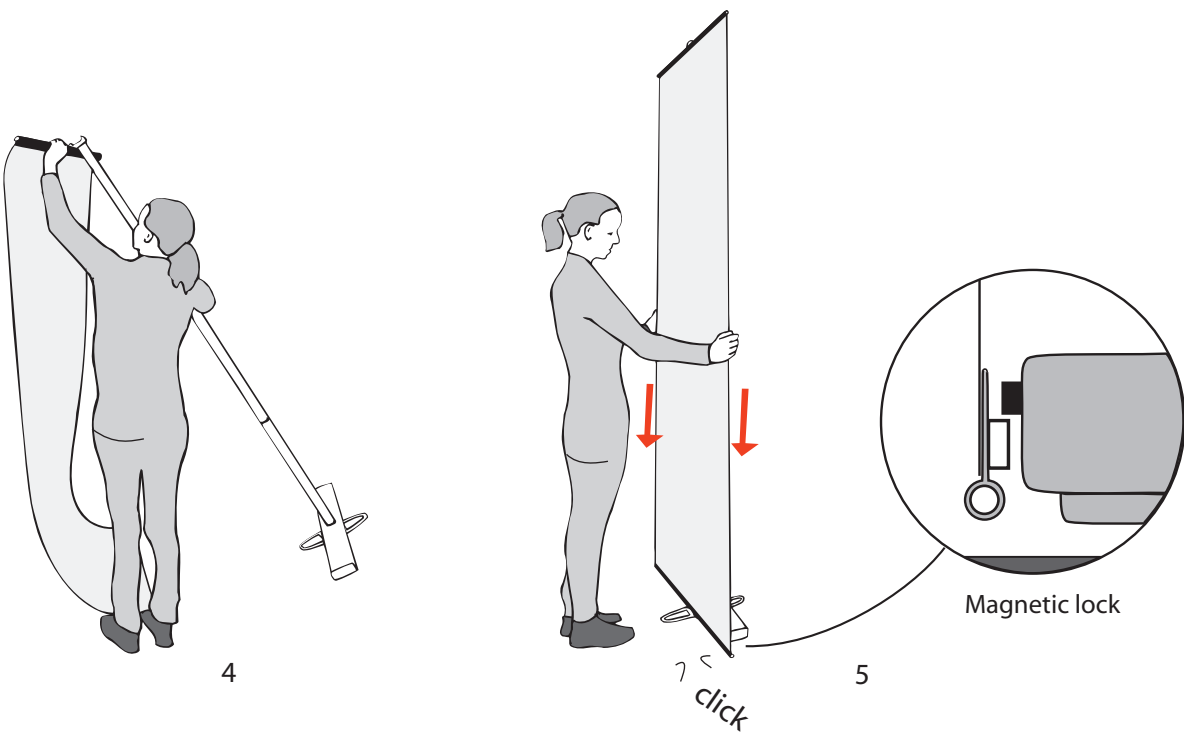
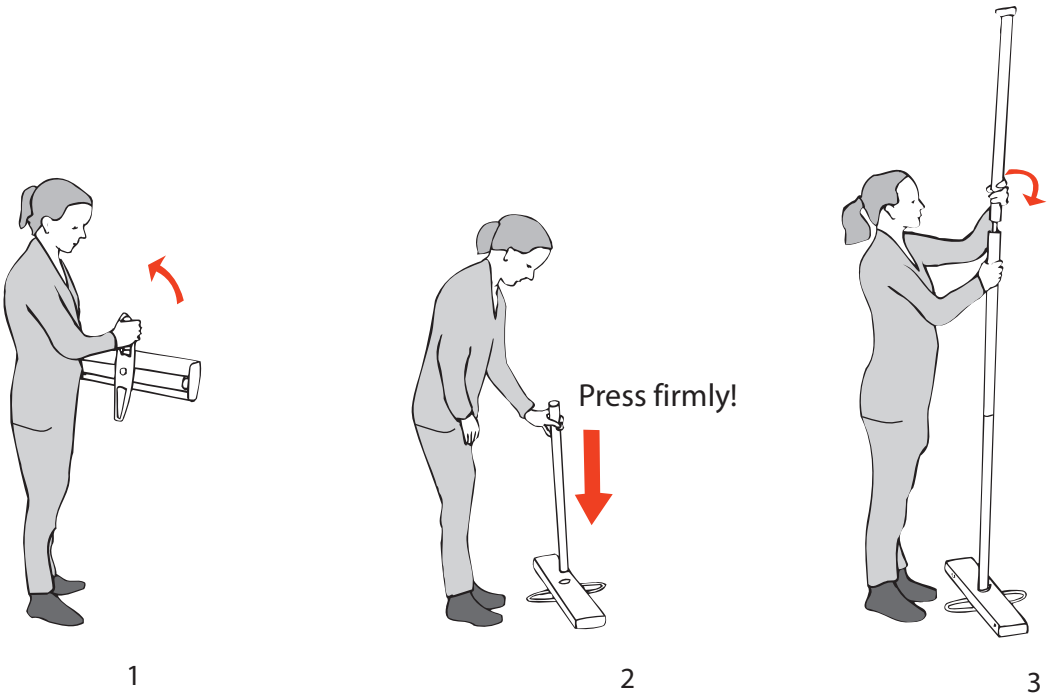


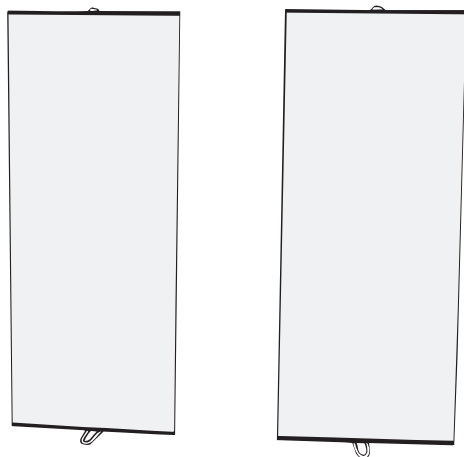
# Set-up Expand LinkWall



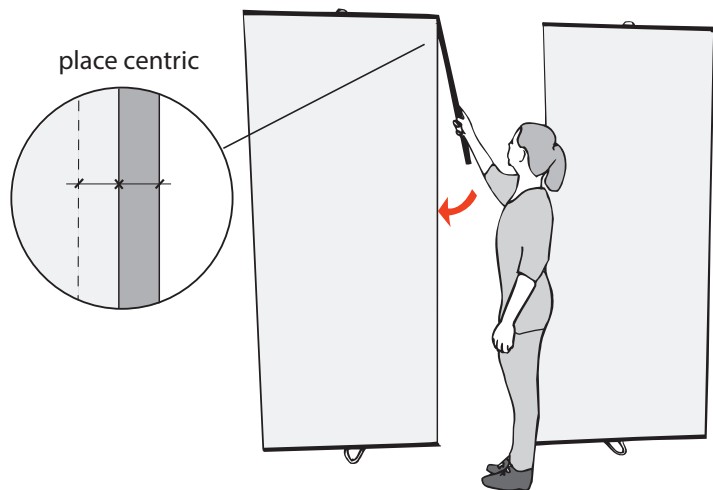
## Set-up with flex link panel

(for taller versions a ladder is recommended)

220 cm height

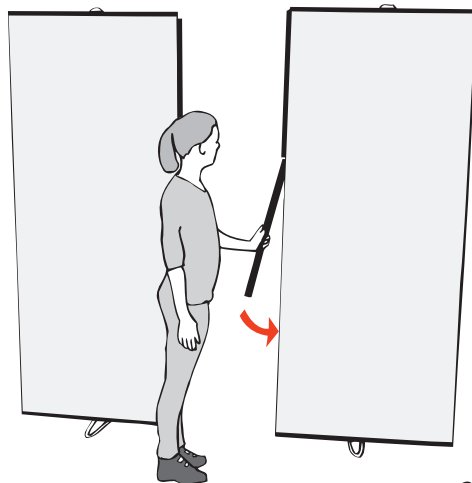


1



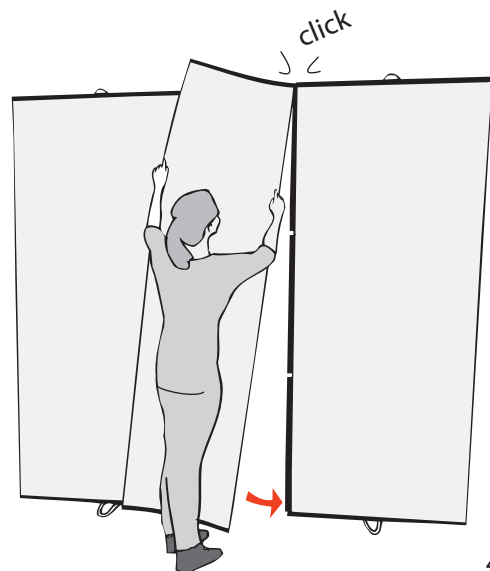
attach magnetic bars

2

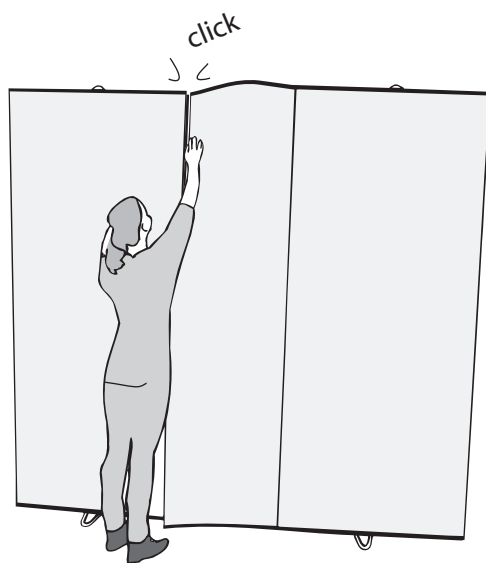


...along both panel sides

3



4



5

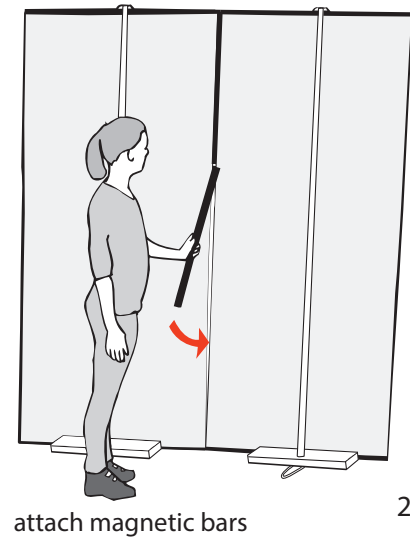
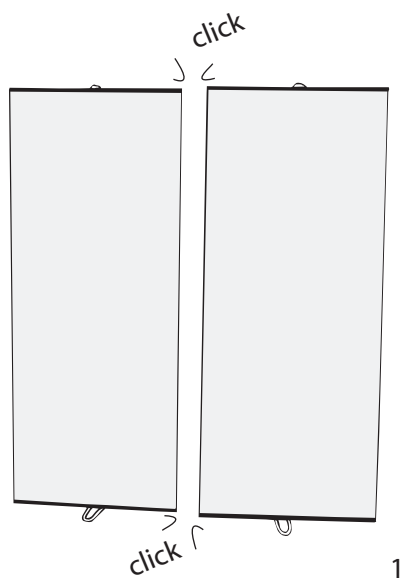


6

## Set-up without flex link panel

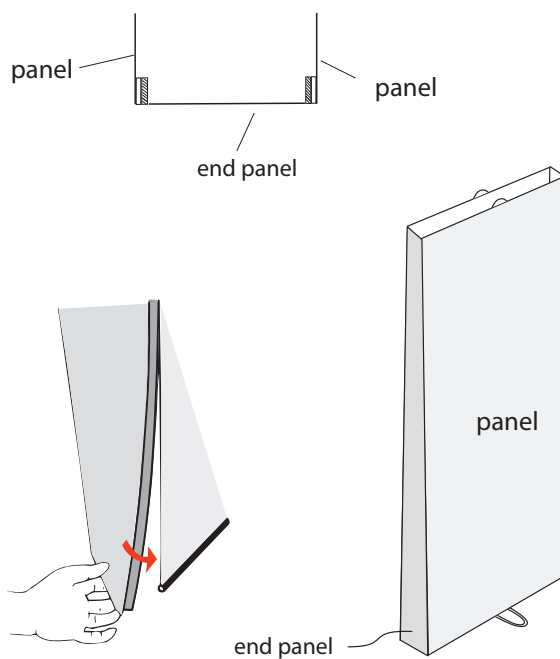
(for taller versions a ladder is recommended)

220 cm height

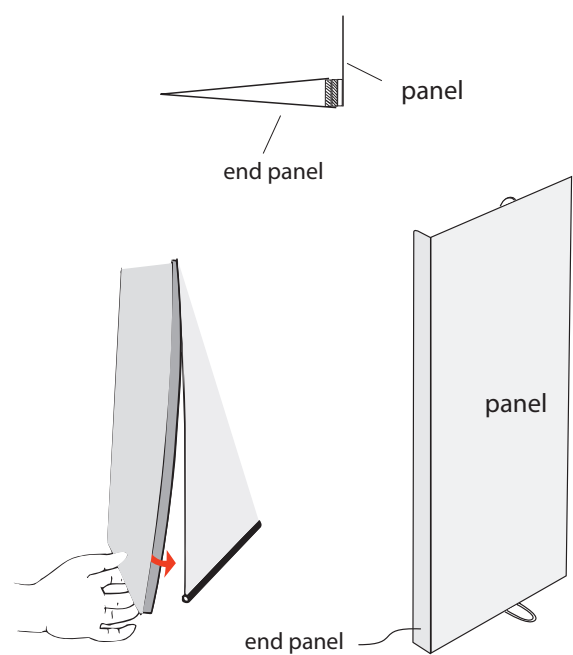


## How to attach end panel

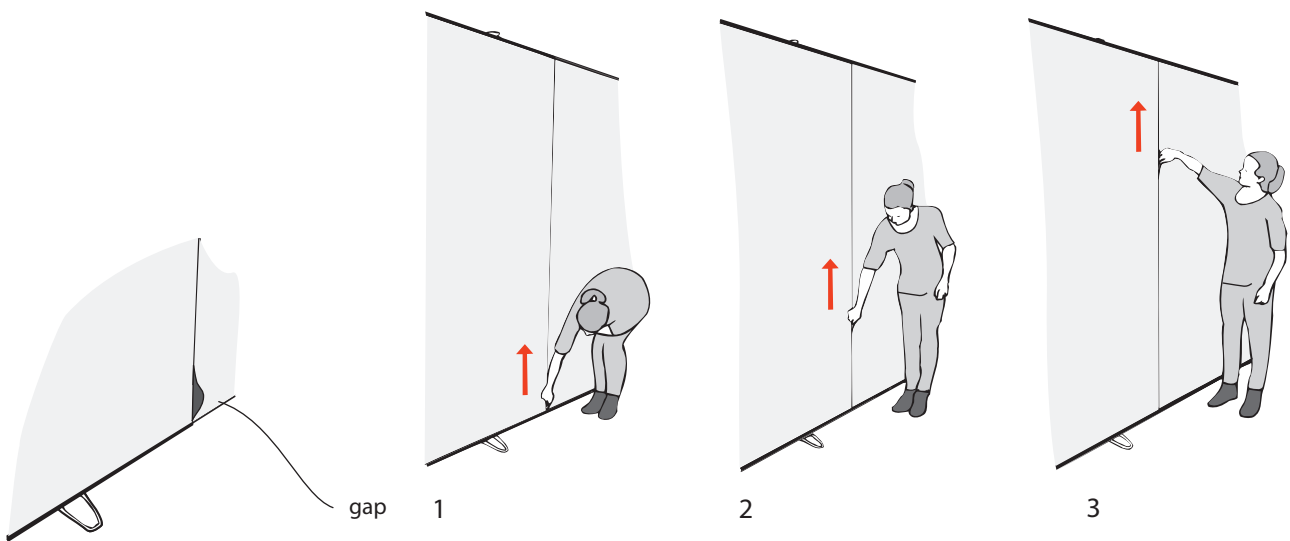
for double sided unit



for single sided unit

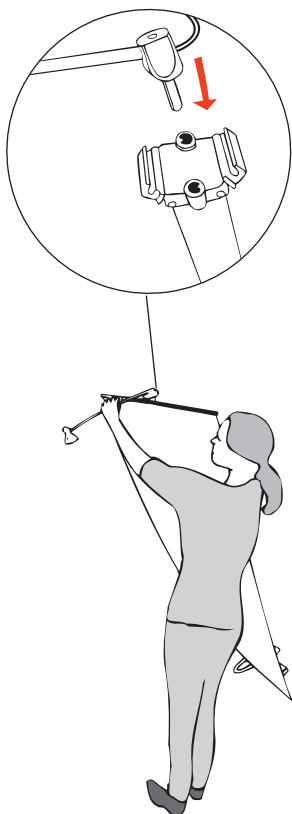


## How to align graphics

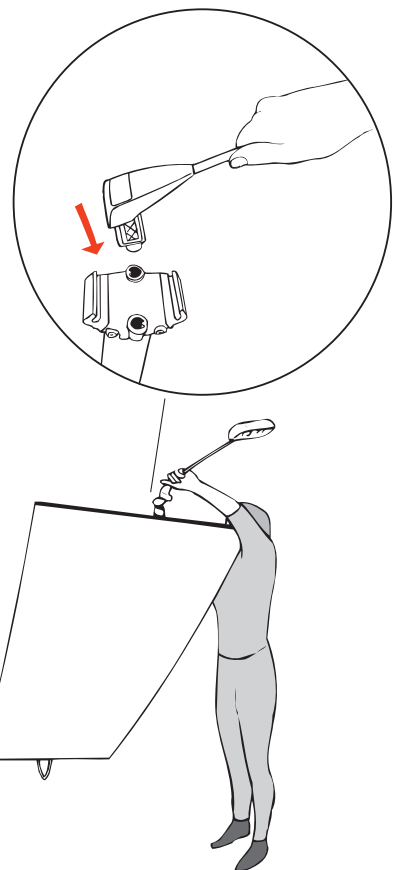
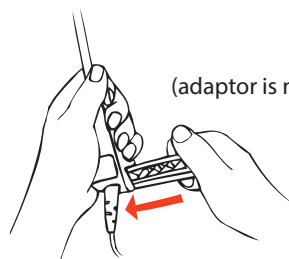


## Attaching spotlights

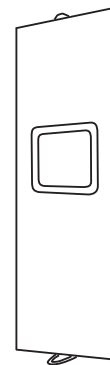
Expand Spotlight 50W



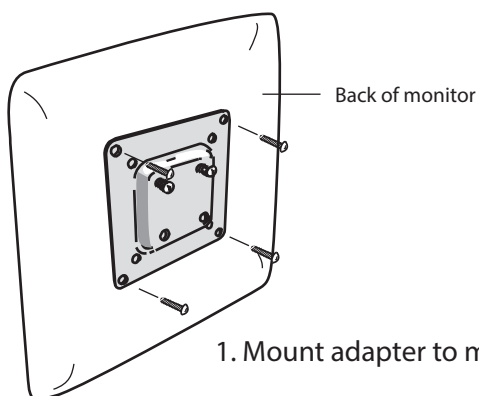
Expand Spotlight 150W/LED



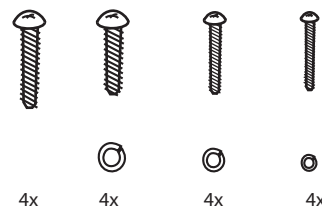
## Expand LinkWall - monitor holder



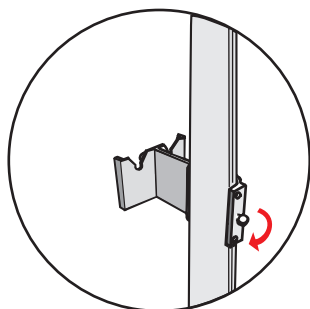
Monitor maximum weight: 4kg



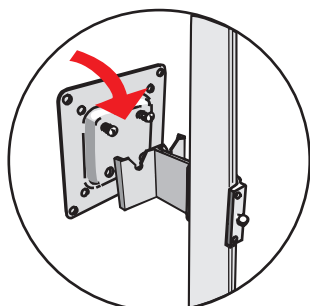
1. Mount adapter to monitor



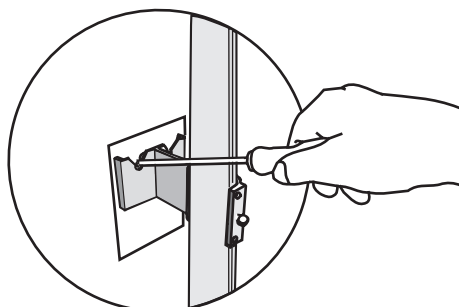
VESA standards: 75-200mm



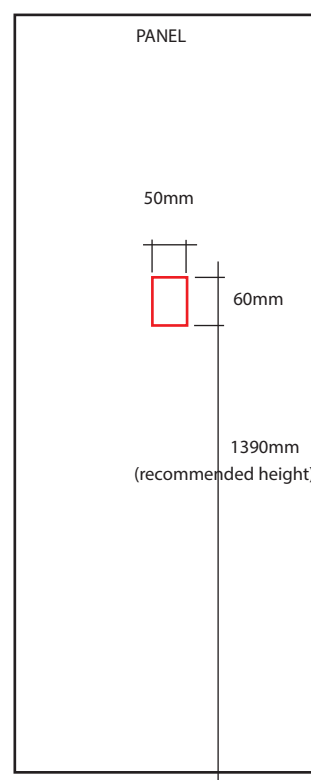
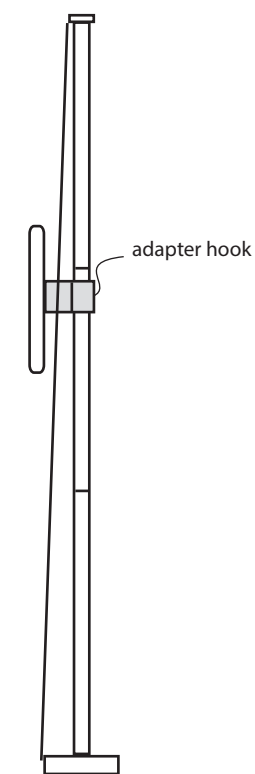
2. Fix adapter hook to pole



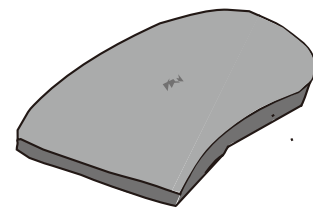
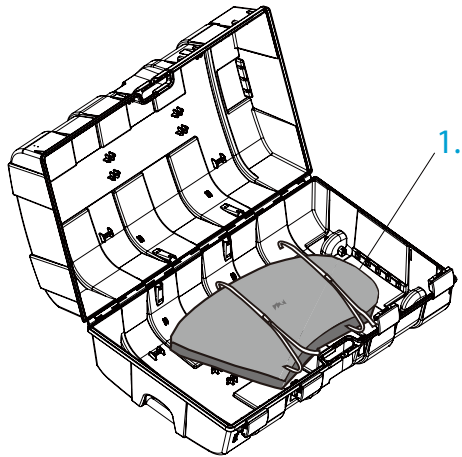
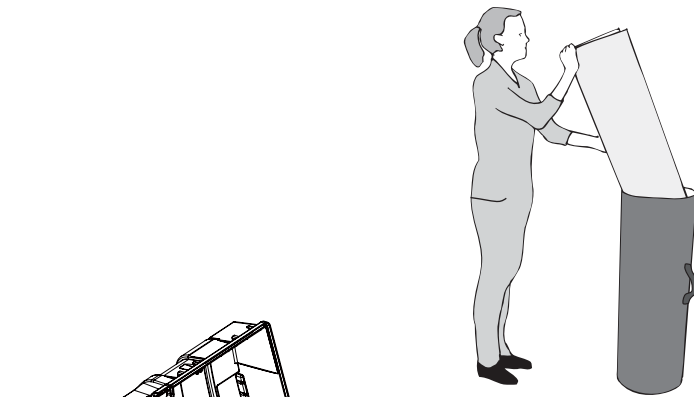
3. Hook on monitor



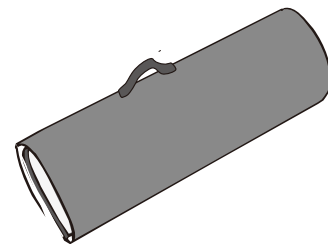
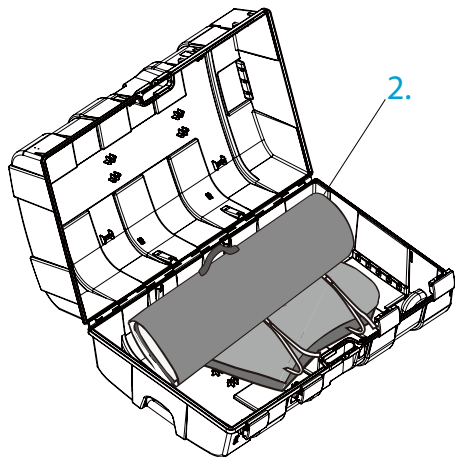
4. Secure screws from behind



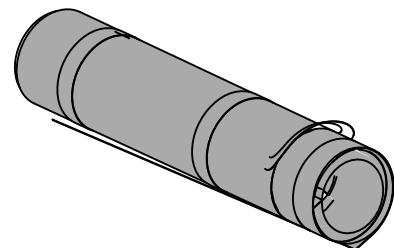
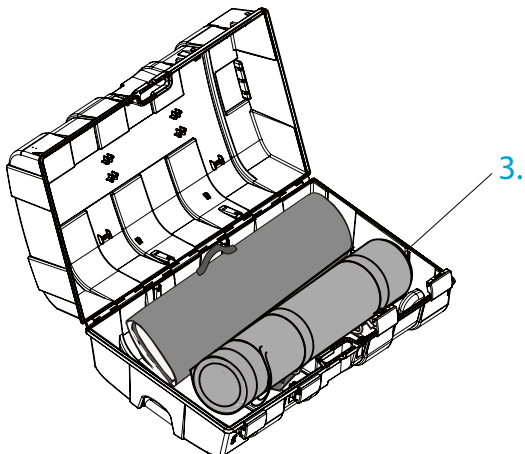
## How to pack Expand LinkWall into PodiumCase



1. Table top



2. Bag-graphic panels



3. LinkWall modules

# Expand LinkWall - floor space

